

## L Feet Mounting Systems For Trapezoidal Metal Roof



### COMPONENTS



L feet



Rail



Rail Splice



Mid Clamp



End Clamp

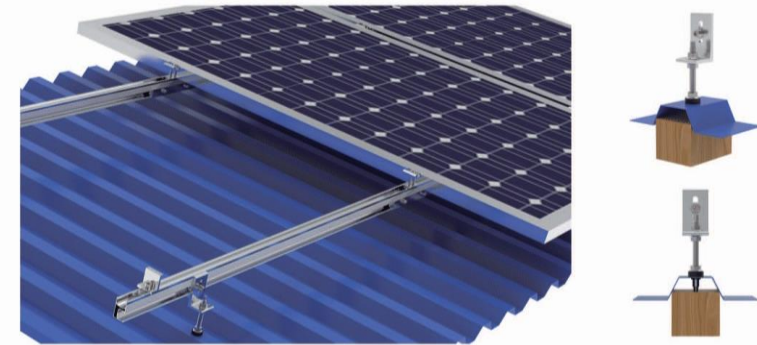
### TECHNICAL DATE

Item	L feet Mounting Systems For Trapezoidal Metal Roof
Material	Structure: Al6005-5(Anodized) Components: SUS304 & Al6005-5(Anodized)
Wind Speed	0-45 m/s
Snow Load	0-150cm
Span Range	1.0-1.5m
Design Standard	AS/NZS 1170, DIN 1055, JIS C8955: 2017, International Building Code IBC 2009
Warranty	12 years

### ADVANTAGES

- \* It's simple design, strong support and easy to be installed
- \* Applied to commercial roof installations and Residential installations

## Hanger Bolt for Metal Roof Solar Mounting System



### COMPONENTS



Hanger Bolt



Rail



Rail Splice



Mid Clamp



End Clamp

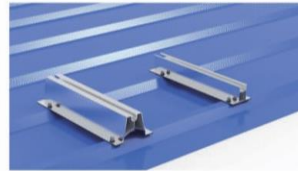
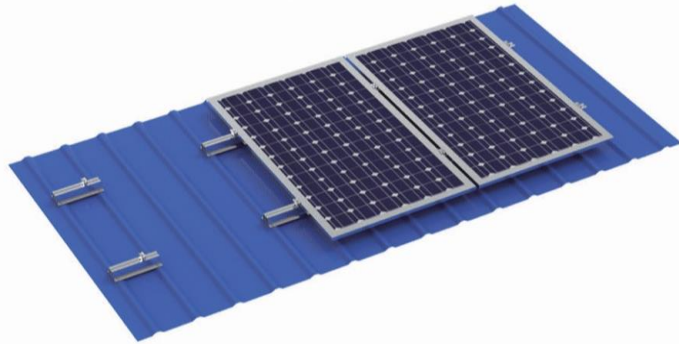
### TECHNICAL DATE

Item	Hanger Bolt Mounting Systems For Metal Roof
Material	Structure: Al6005-5(Anodized) Components: SUS304 & Al6005-5(Anodized)
Wind Speed	0-45 m/s
Snow Load	0-150cm
Span Range	1.0-1.5m
Design Standard	AS/NZS 1170, DIN 1055, JIS C8955: 2017, International Building Code IBC 2009
Warranty	12 years

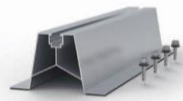
### ADVANTAGES

- \* Available for roof steel beam & wood beam
- \* With L feet or adaptor plate to meet different rails installation

## Short Rail for Metal Roof Solar Mounting System



### COMPONENTS



Short Rail-H70



Short Rail-H50



Short Rail-H30



Mid Clamp



End Clamp

### TECHNICAL DATE

Item	Short Rail/Mini Rail Mounting Systems For Metal Roof
Material	Structure: Al6005-5(Anodized) Components: SUS304 & Al6005-5(Anodized)
Wind Speed	0-45 m/s
Snow Load	0-150cm
Rail Length	120mm,150mm,200mm,250mm
Design Standard	AS/NZS 1170, DIN 1055, JIS C8955: 2017, International Building Code IBC 2009
Warranty	12 years

### ADVANTAGES

- \* It's most economical solar mounting design
- \* Both for landscape and portrait array
- \* Easy & fast installation

## KlipLok for Metal Roof Solar Mounting System



### COMPONENTS



KlipLok



Rail



Rail Splice



Mid Clamp



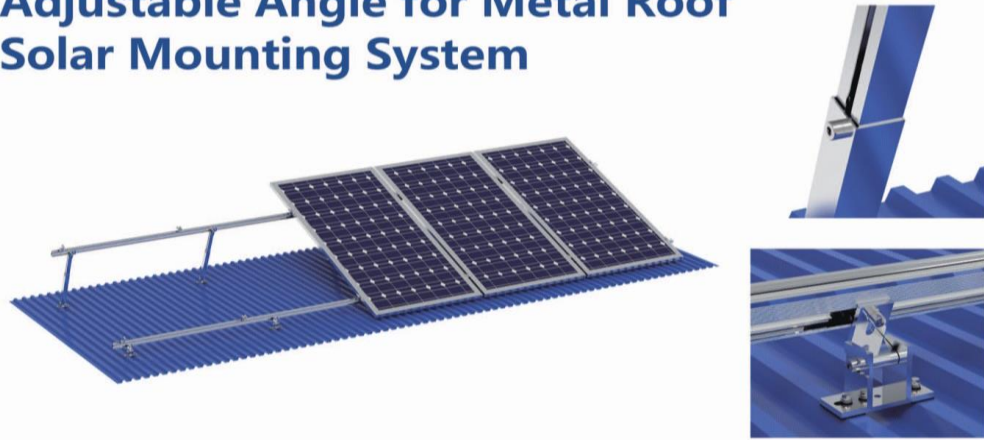
End Clamp

### TECHNICAL DATE

Item	KlipLok Mounting Systems For Metal Roof
Material	Structure: Al6005-5(Anodized) Components: SUS304 & Al6005-5(Anodized)
Wind Speed	0-45 m/s
Snow Load	0-150cm
Design Standard	AS/NZS 1170, DIN 1055, JIS C8955: 2017, International Building Code IBC 2009
Warranty	12 years

PD-KL-406	PD-KL-700A	PD-KL-700B	PD-KL-03	PD-KL-04
PD-KL-05	PD-KL-06	PD-KL-07	PD-KL-08	PD-KL-09

# Adjustable Angle for Metal Roof Solar Mounting System



## COMPONENTS



## TECHNICAL DATE

Material	Structure: Al6005-5(Anodized) Components: SUS304 & Al6005-5(Anodized)
Tilt Angle	Adjustable 10°-15°/ 15°-30°
Wind Speed	0-45 m/s
Snow Load	0-150cm
Array	Landscape and Portrait
Design Standard	AS/NZS 1170, DIN 1055, JIS C8955: 2017, International Building Code IBC 2009
Warranty	12 years

## ADVANTAGES

- \* Adjustable angle for maximum benefit from solar panels
- \* Low cost construction, suitable for commercial and residential installation

# Triangle Solar Mounting System



## COMPONENTS



## TECHNICAL DATE

Material	Structure: Al6005-5(Anodized) Components: SUS304 & Al6005-5(Anodized)
Tilt Angle	Adjustable 10°-15°/ 15°-30°
Wind Speed	0-45 m/s
Snow Load	0-150cm
Array	Landscape and Portrait
Design Standard	AS/NZS 1170, DIN 1055, JIS C8955: 2017, International Building Code IBC 2009
Warranty	12 years

## ADVANTAGES

- \* Suitable for landscape and portrait installation
- \* Ships pre-assembled, reducing installation costs
- \* High corrosion resistant material

# Tile Roof Hook Solar Mounting System



## COMPONENTS



Structural highlights: High flexibility thanks to different roof hook combinations for different roofs, applied to sloping tile roofs, flat tile roofs and asphalt tile roofs



## COMPONENTS



# SOLAR HOOKS

PD-TRS-01	PD-TRS-02	PD-TRS-03	PD-TRS-04
PD-TRS-05	PD-TRS-06	PD-TRS-07	PD-TRS-08
PD-TRS-09	PD-TRS-10	PD-TRS-11	PD-TRS-12
PD-TRS-13	PD-TRS-14	PD-TRS-15	PD-TRS-16

## Aluminum Ballast Mounting System

SOUTH DIRECTION

EAST-WEST DIRECTION



### COMPONENTS



Rear Leg

Front Leg

Mid Clamp

End Clamp

Bottom Profile

EPDM

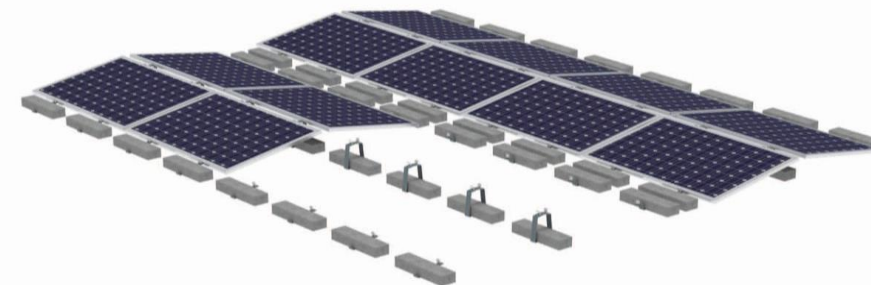
### TECHNICAL DATE

Material	Structure: AL-6005-T5 (Anodized), Components: SUS304 & AL-6005-T5 (Anodized)
Tilt Angle	10°/East-West
Application	Flat concrete roof
Dimension	As per drawing
Certificate	CE ,SGS
Panel	Panel: :2270 x1134

### INSTALLATION



## Steel Ballast Mounting System



### COMPONENTS



End Clamp

Front Leg

Rear Leg

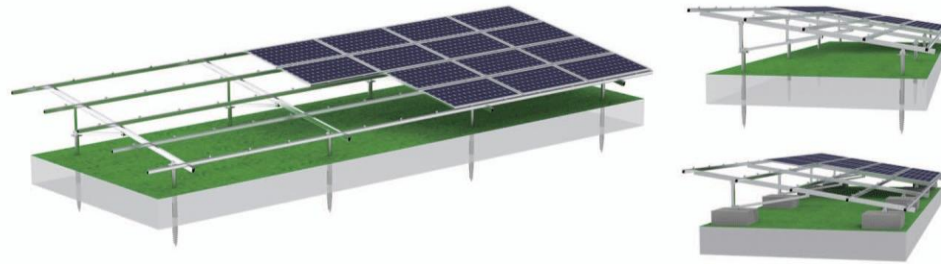
### TECHNICAL DATE

Material	Structure:Magnesium-aluminum-zinc Components: SUS304 & Al6005-5(Anodized)
Application	Flat concrete roof
Tilt Angle	10°-15°/ East-West direction
Wind Speed	0-45 m/s
Snow Load	0-150cm
Design Standard	AS/NZS 1170, DIN 1055, JIS C8955: 2017, International Building Code IBC 2009
Warranty	12 years

### ADVANTAGES

- \* Available for east-west direction
- \* Mg-Al-Zn material with high strength and high corrosion resistance
- \* Low cost and easy installation

## Aluminum Ground Solar Mounting System-A/N/VI/W



### COMPONENTS



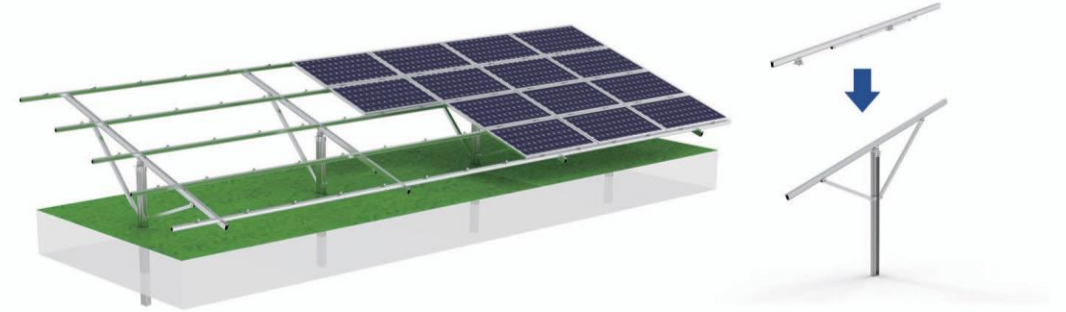
### TECHNICAL DATE

Material	Structure:AL-6005-T5 (Anodized) Components: SUS304 & Al6005-5(Anodized)
Application	Commercial and Residential installation
Tilt Angle	0-60°
Wind Speed	0-60 m/s
Snow Load	0-150cm
Ground Clearance	0-1m
Design Standard	AS/NZS 1170, DIN 1055, JIS C8955: 2017, International Building Code IBC 2009
Warranty	12 years

### ADVANTAGES

- \* Various structural designs to meet different strength requirements
- \* Shipped with highly pre-assembled for fast installation, and lower labor costs

## Single Piling Ground Solar Mounting System



### COMPONENTS



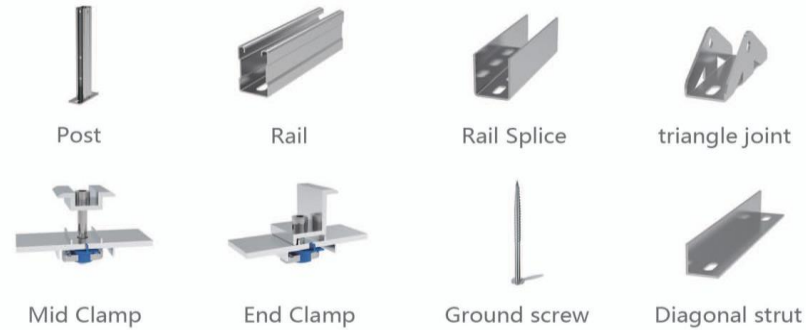
### TECHNICAL DATE

Material	Structure:HDG&AL-6005-T5 (Anodized) Components: Al6005-5(Anodized) &HDG
Application	Commercial and Residential installation
Tilt Angle	0-60°
Wind Speed	0-60 m/s
Snow Load	0-150cm
Ground Clearance	0-1m
Design Standard	AS/NZS 1170, DIN 1055, JIS C8955: 2017, International Building Code IBC 2009
Warranty	12 years

## HDG Ground Solar Mounting System



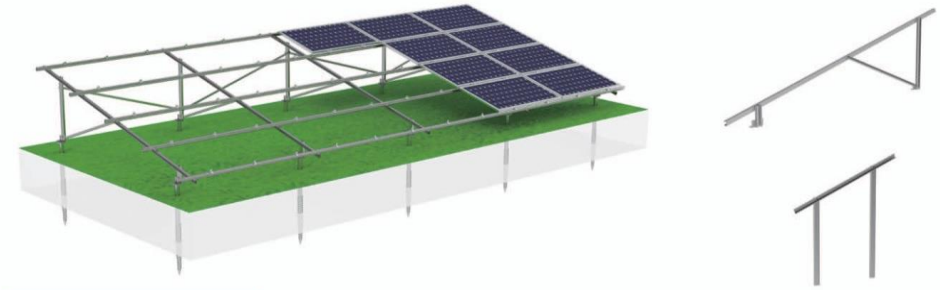
### COMPONENTS



### TECHNICAL DATE

Material	Structure: Hot Dip Galvanized Components: HDG & Al6005-5(Anodized)
Application	Commercial installation
Tilt Angle	0-60°
Wind Speed	0-60 m/s
Snow Load	0-150cm
Ground Clearance	0-1m
Design Standard	AS/NZS 1170, DIN 1055, JIS C8955: 2017, International Building Code IBC 2009
Warranty	12 years

## MG-AL-ZN Ground Solar Mounting Solution



### COMPONENTS



### TECHNICAL DATE

Material	Structure: Magnesium-aluminum-zinc plated (S350GD/S450GD) Components: HDG / Al6005-5(Anodized)
Application	Commercial installation
Tilt Angle	0-60°
Array	South, or East-West
Wind Speed	0-60 m/s
Snow Load	0-150cm
Ground Clearance	0-1m
Design Standard	AS/NZS 1170, DIN 1055, JIS C8955: 2017, International Building Code IBC 2009
Warranty	12 years
Advantage	Suitable for large scale solar park High structural strength, low unit price,

# Aluminum Solar Carport System



None waterproof Design



Waterproof Design

## COMPONENTS



Post



Rail



Beam



H Joint



Mid Clamp



End Clamp



Base

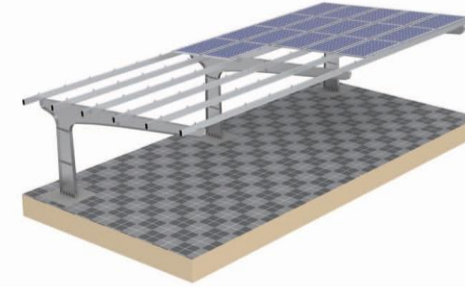


Right angle bolt

## TECHNICAL DATE

Material	Structure:AL-6005-T5 (Anodized) Components: SUS304 & Al6005-5(Anodized) &HDG
Application	Commercial and Residential installation
Tilt Angle	0-10°
Wind Speed	0-60 m/s
Snow Load	0-150cm
Ground Clearance	2-2.5m
Design Standard	AS/NZS 1170, DIN 1055, JIS C8955: 2017, International Building Code IBC 2009
Warranty	12 years
Advantage	Available for waterproof design and non-waterproof design,

# Steel Solar Carport System



High-strength steel photovoltaic car port. Beautiful design, unobstructed and convenient parking

## COMPONENTS



Steel Post



Steel Beam



Rail



Rail Connector



Rail Clamp



Mid Clamp



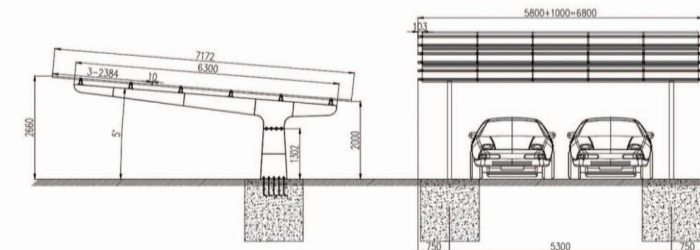
End Clamp



Right Angle Bolt

## TECHNICAL DATE

Material	Structure:Hot Dip Galvanized; Component:AL-6005-T5/SUS304
Tilt Angle	0-10°
Ground Clearance	2-2.5m
Application	Commercial





## RAIL



PD-HR
H RAIL -30*40mm



PD-R50-01
R50 RAIL- 24.2*50mm



PD-R05-02
R50 RAIL -28*50mm



PD-R40-01
R40 Rail(L)-40*40mm



PD-R40-02
R40 Rail(H) -40*40mm



PD-R40-04
R40 Rail (T) -40*40mm



PD-SP-HR
H Rail Splice



PD-SP-R50
R50 Rail Splice



PD-SP-R40
R40 Splice

## RAILESS/ SHORT RAIL



PD-U25
--------



PD-U30
--------



PD-U50
--------



PD-U50(R)
-----------



PD-U60
--------



PD-U70
--------

## CLAMP



PD-MC-01(U20)
30-50MM
AL-6005-T5 / A2/ SUS304



PD-MC-02(U25)
30-50MM
AL-6005-T5 / A2/ SUS304



PD-MC-03
30-50MM
AL-6005-T5 / A2/ SUS304



PD-MC-04
30-50MM
AL-6005-T5 / A2/ SUS304



PD-MC-05
30-50MM
AL-6005-T5 / A2/ SUS304



PD-MC-06
30-50MM
AL-6005-T5 / A2/ SUS304



PD-MC-07
30-50MM
AL-6005-T5 / A2/ SUS304



PD-MC-08
30-50MM
AL-6005-T5 / A2/ SUS304



PD-RMC-01
30-50MM
AL-6005-T5 / A2/ SUS304



PD-SMC-01
30-50MM
AL-6005-T5 / A2/ SUS304



PD-EC-01
30-50MM
AL-6005-T5 / A2/ SUS304



PD-EC-02
30-50MM
AL-6005-T5 / A2/ SUS304



PD-EC-03
30-50MM
AL-6005-T5 / A2/ SUS304



PD-EC-04
30-50MM
AL-6005-T5 / A2/ SUS304



PD-EC-05
30-50MM
AL-6005-T5 / A2/ SUS304



PD-EC-06
30-50MM
AL-6005-T5 / A2/ SUS304



PD-EC-07
30-50MM
AL-6005-T5 / A2/ SUS304



PD-EC-08
30-50MM
AL-6005-T5 / A2/ SUS304



PD-REC-01
30-50MM
AL-6005-T5 / A2/ SUS304



PD-SEC-01
30-50MM
AL-6005-T5 / A2/ SUS304



PD-TFEC-01
6-8mm



PD-TFMC-01
6-8mm

# COMPONENT

## GROUNDING KITS



Cable Clip 1#	Cable Clip 2#	Cable Clip 3#	Cable Clip 4#	Cable Clip 5#
sus304				



Grounding Washer 1#	Grounding Washer 2#	Grounding Washer 3#	Grounding Washer 4#	Grounding Washer 5#
sus304				

## HANGER BOLTS



PD-HB-W-01	PD-HB-S-02	PD-HB03
Hanger bolt for wooden beam	Hanger bolt for steel beam	Hanger bolt for both beam
200-300mm		
SUS304	SUS304	STEEL

## BOLT AND NUT



Carriage bolt	Hexagon socket bolt	Hex Head Cap Bolt	T-bolt
sus304			



Flange Nuts	Hexagon Nut	Square Nut	Diamond Nut
sus304			Q235B



Flat Washer	Spring Washer
sus304	



M6.3*25	M6.3*80
sus410	

# Ground Screw

## FLANGE PLATE



10 HOLE



8 HOLE



6 HOLE



8 HOLE



12 HOLE

## TECHNICAL DATE

	Characteristic	Continuous spiral blade Continuous helical large blade Discontinuous helical large blade
	Material	Q235B
	Surface	Hot dip galvanized
	Coating thickness	Average 80µm
	Diameter	Flange plate:Φ200mm Round tube:Φ76mm
	Length	1000mm,1200mm,1600mm,1800mm,2000mm

# PROJECT CASE FOR GROUND



# PROJECT CASE FOR ROOFING



## Packing and Shipping



Accessories Package



Aluminum Rail Package



Container Loading



Ground Screw Package



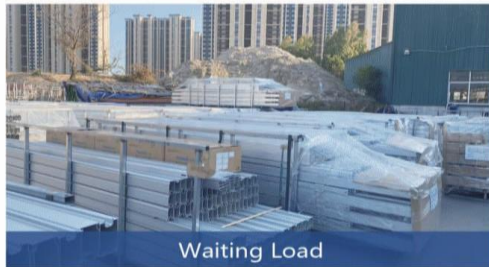
Pre-assemble Rail Package



Project Container



Steel Rail Package



Waiting Load

## Production Process



Aluminum Ingots



Extrusion



Anodized



Cutting



Finished Product